

Household Totals by Township

Households by Township			
Political Township ⁽¹⁾	Households (2015) ⁽²⁾	Households (2026) ⁽³⁾	Households (2040) ⁽²⁾
Aurora	47,523	53,085	60,164
Batavia	12,993	14,327	16,025
Big Rock	891	1,366	1,971
Blackberry	5,461	6,989	8,933
Burlington	895	1,347	1,923
Campton	6,201	7,789	9,811
Dundee	21,690	24,429	27,916
Elgin	34,575	37,834	41,981
Geneva	10,311	11,737	13,551
Hampshire	3,555	5,177	7,241
Kaneville	489	522	563
Plato	3,120	5,533	8,605
Rutland	10,022	15,509	22,492
St. Charles	18,730	20,142	21,939
Sugar Grove	9,118	14,359	21,029
Virgil	866	1,197	1,619
Totals	186,440	221,342	265,763

Source:

(1) Political Township – Kane County GIS Department

(2) 2015 and 2040 Population – CMAP GoTo 2040 Plan Inputs – October 2014 Conformity Update

(3) 2026 Population – Interpolated based on 2015 and 2040 Household data



Population Totals by Township

Population by Township			
Political Township ⁽¹⁾	Population (2015) ⁽²⁾	Population (2026) ⁽³⁾	Population (2040) ⁽²⁾
Aurora	151,003	168,178	190,036
Batavia	36,660	40,641	45,708
Big Rock	2,311	3,729	5,533
Blackberry	16,821	21,748	28,020
Burlington	2,352	3,618	5,228
Campton	18,917	23,865	30,162
Dundee	67,757	75,825	86,094
Elgin	103,063	112,886	125,387
Geneva	27,739	31,544	36,388
Hampshire	9,054	13,768	19,767
Kaneville	1,283	1,380	1,503
Plato	8,800	16,781	26,939
Rutland	24,679	41,060	61,908
St. Charles	51,269	55,162	60,116
Sugar Grove	24,336	40,929	62,048
Virgil	2,212	3,194	4,443
Totals	548,257	654,307	789,280

Source:

(1) Political Township – Kane County GIS Department

(2) 2015 and 2040 Population – CMAP GoTo 2040 Plan Inputs – October 2014 Conformity Update

(3) 2026 Population – Interpolated based on 2015 and 2040 Population data



Employment Totals by Township

Employment by Township			
Political Township⁽¹⁾	Employment (2015)⁽²⁾	Employment (2026)⁽³⁾	Employment (2040)⁽²⁾
Aurora	51,584	62,608	76,639
Batavia	13,223	15,339	18,032
Big Rock	3,598	5,444	7,794
Blackberry	2,647	3,091	3,657
Burlington	511	784	1,132
Campton	3,316	5,951	9,304
Dundee	30,369	40,563	53,538
Elgin	41,498	48,163	56,646
Geneva	22,089	24,554	27,692
Hampshire	3,792	5,093	6,748
Kaneville	826	826	826
Plato	1,589	3,488	5,904
Rutland	5,376	11,231	18,682
St. Charles	25,245	29,173	34,172
Sugar Grove	6,447	12,066	19,218
Virgil	341	410	498
Totals	212,451	268,785	340,482

Source:

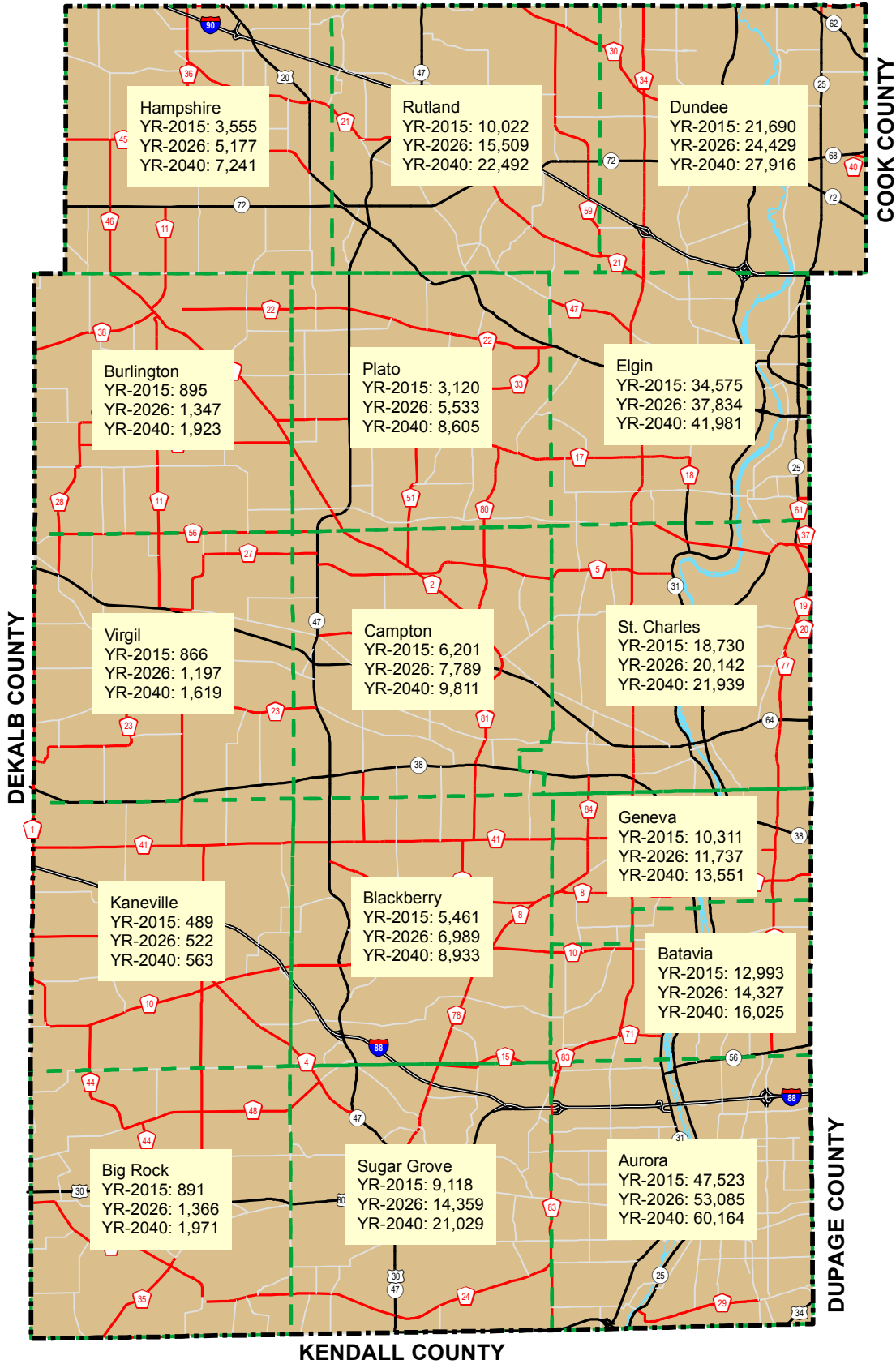
(1) Political Township – Kane County GIS Department

(2) 2015 and 2040 Population – CMAP GoTo 2040 Plan Inputs – October 2014 Conformity Update

(3) 2026 Population – Interpolated based on 2015 and 2040 Employment data



MCHENRY COUNTY



Revised: 01/22/2016

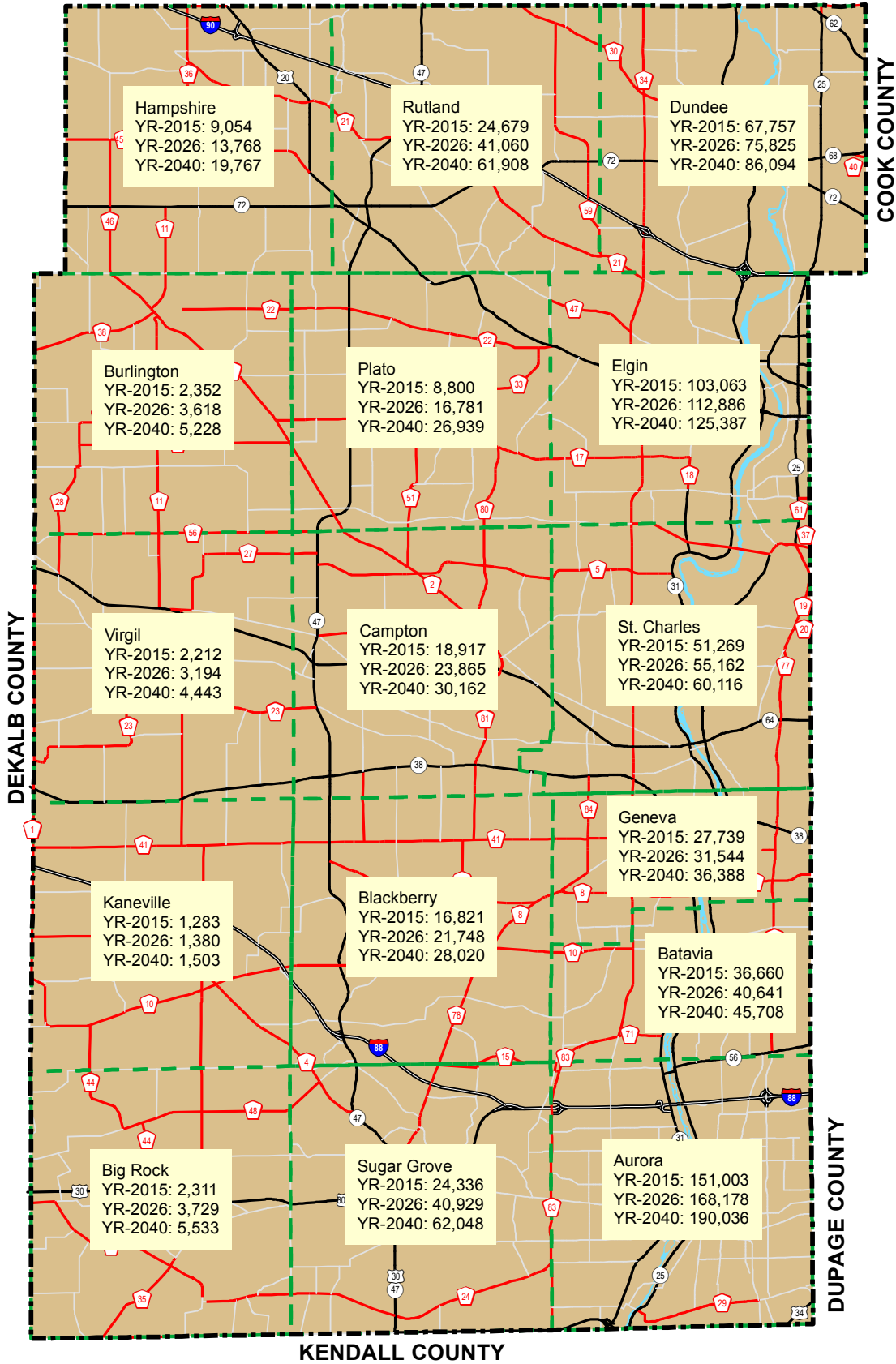


- Households
- Kane County Boundary
- Political Township Boundaries

Kane County Households
by Township

Exhibit B-1
Kane County 2040 LRTP

MCHENRY COUNTY



Revised: 01/22/2016

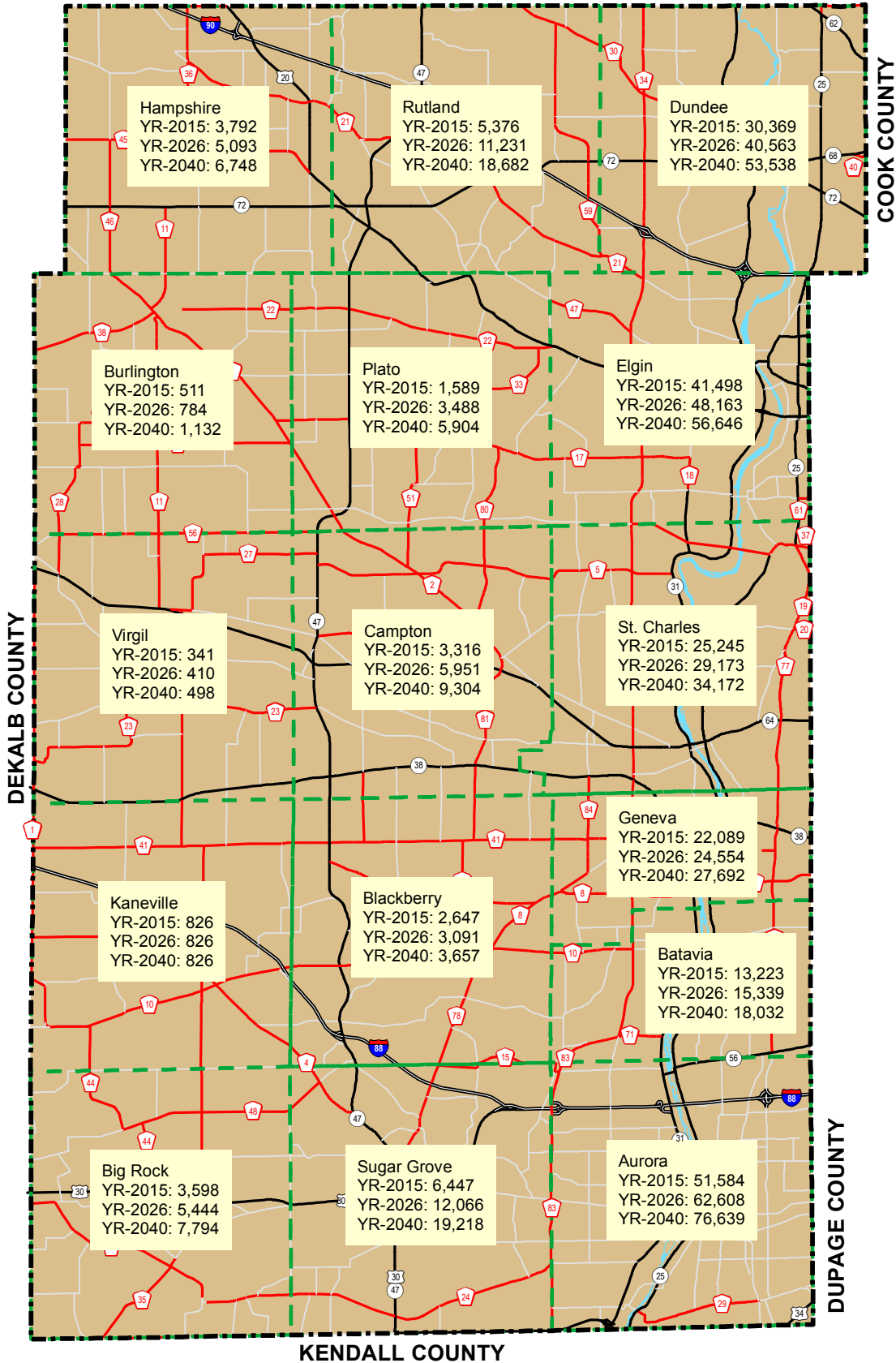


- Population
- Kane County Boundary
 - Political Township Boundaries

Kane County Population by Township

Exhibit B-2
Kane County 2040 LRTP

MCHENRY COUNTY



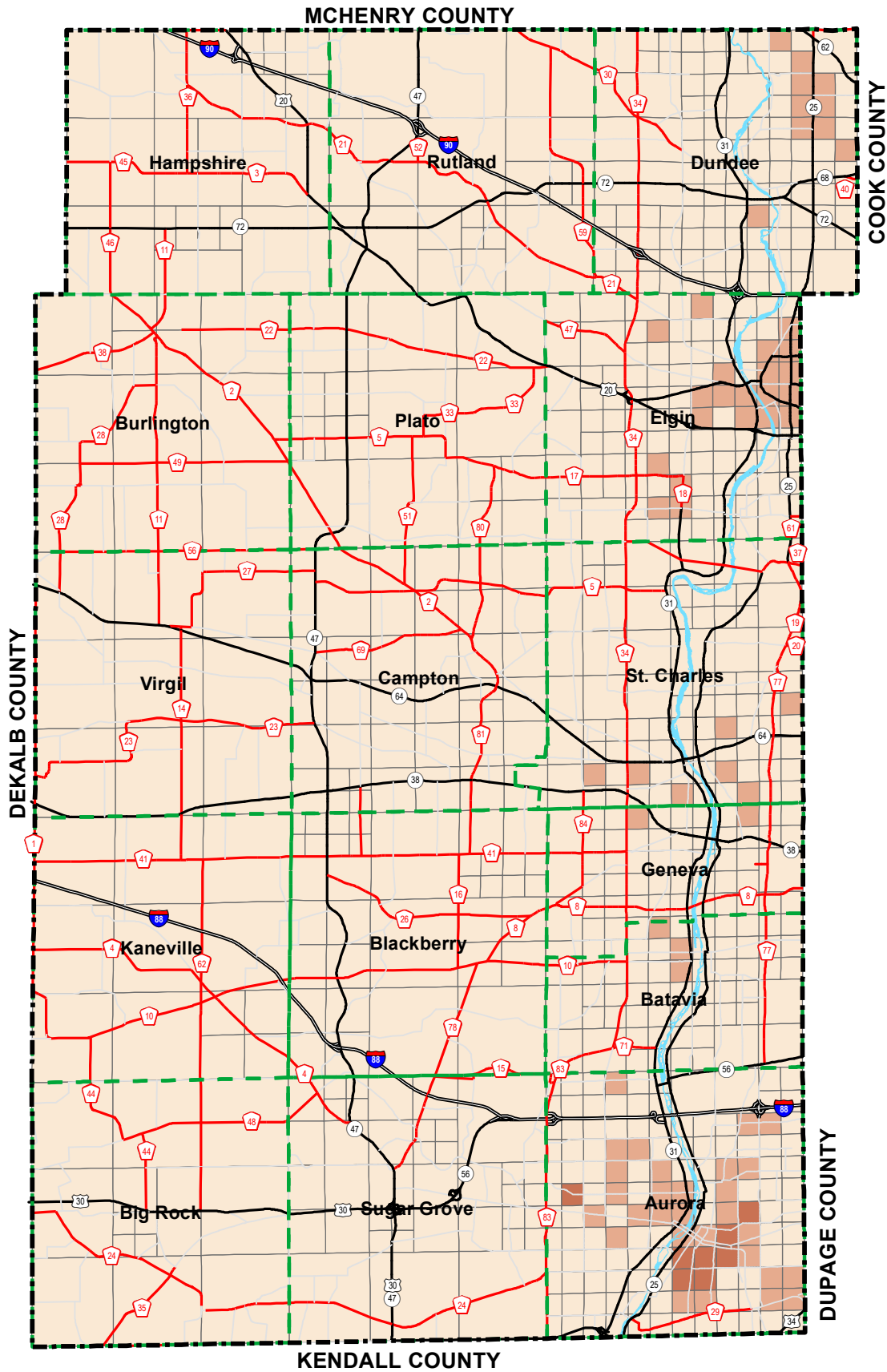
Revised: 01/22/2016



- Employment
- Kane County Boundary
 - Political Township Boundaries

Kane County Employment by Township

Exhibit B-3
Kane County 2040 LRTP



Revised: 01/22/2016



Household Density (HH Per Acre)

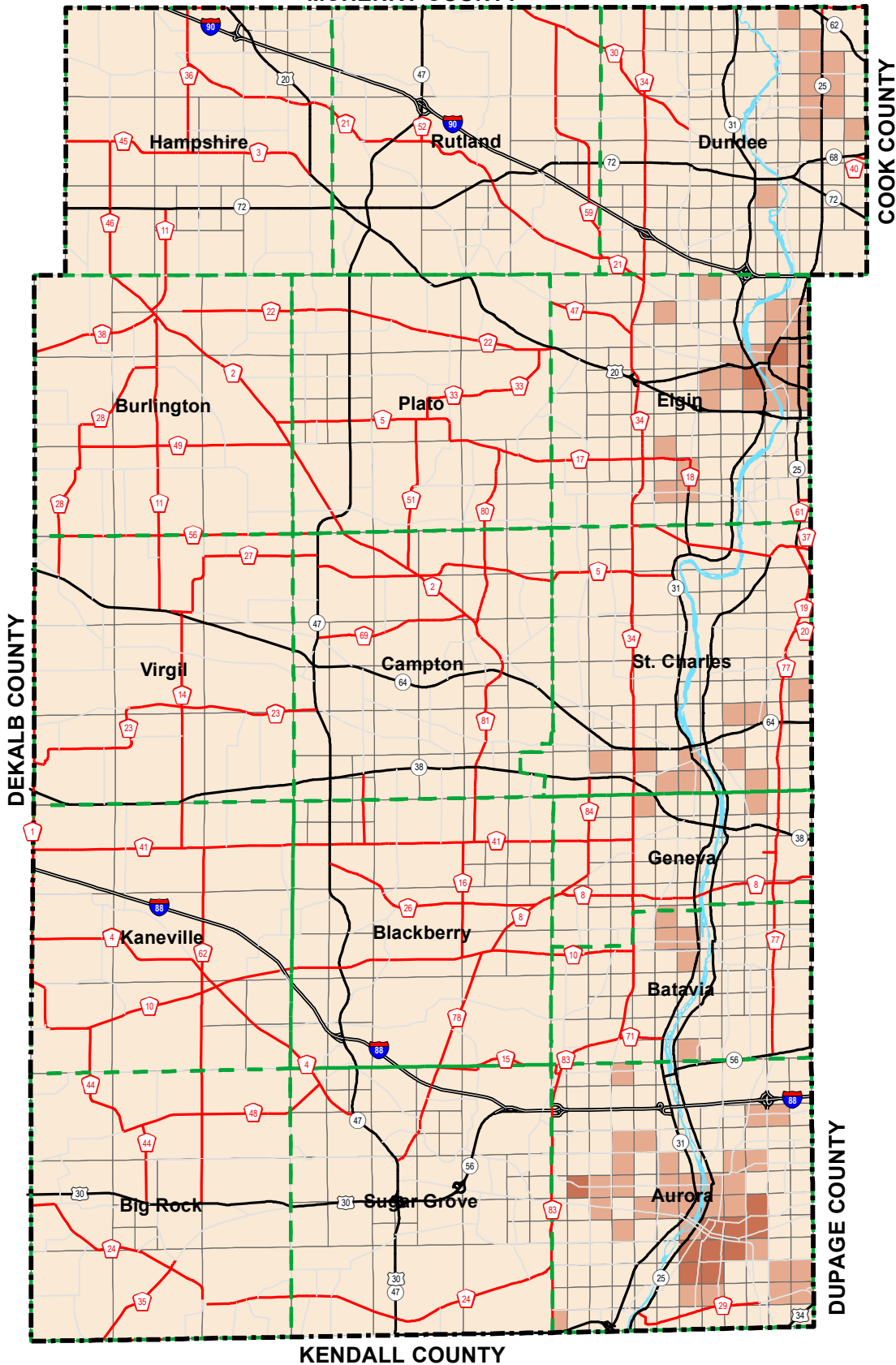
- 0 - 3 7 - 10 Kane County Boundary
- 4 - 6 > 10 Political Township Boundaries

Source:
 (1) Political Township - Kane County GIS Department
 (2) 2015 Households - Generated Based on CMAP GoTo 2040 Plan Inputs

2015 Household Density
 by Kane County TAZ

Exhibit C-1
 Kane County Impact Fee

MCHENRY COUNTY



Revised: 01/22/2016



Household Density (HH Per Acre)

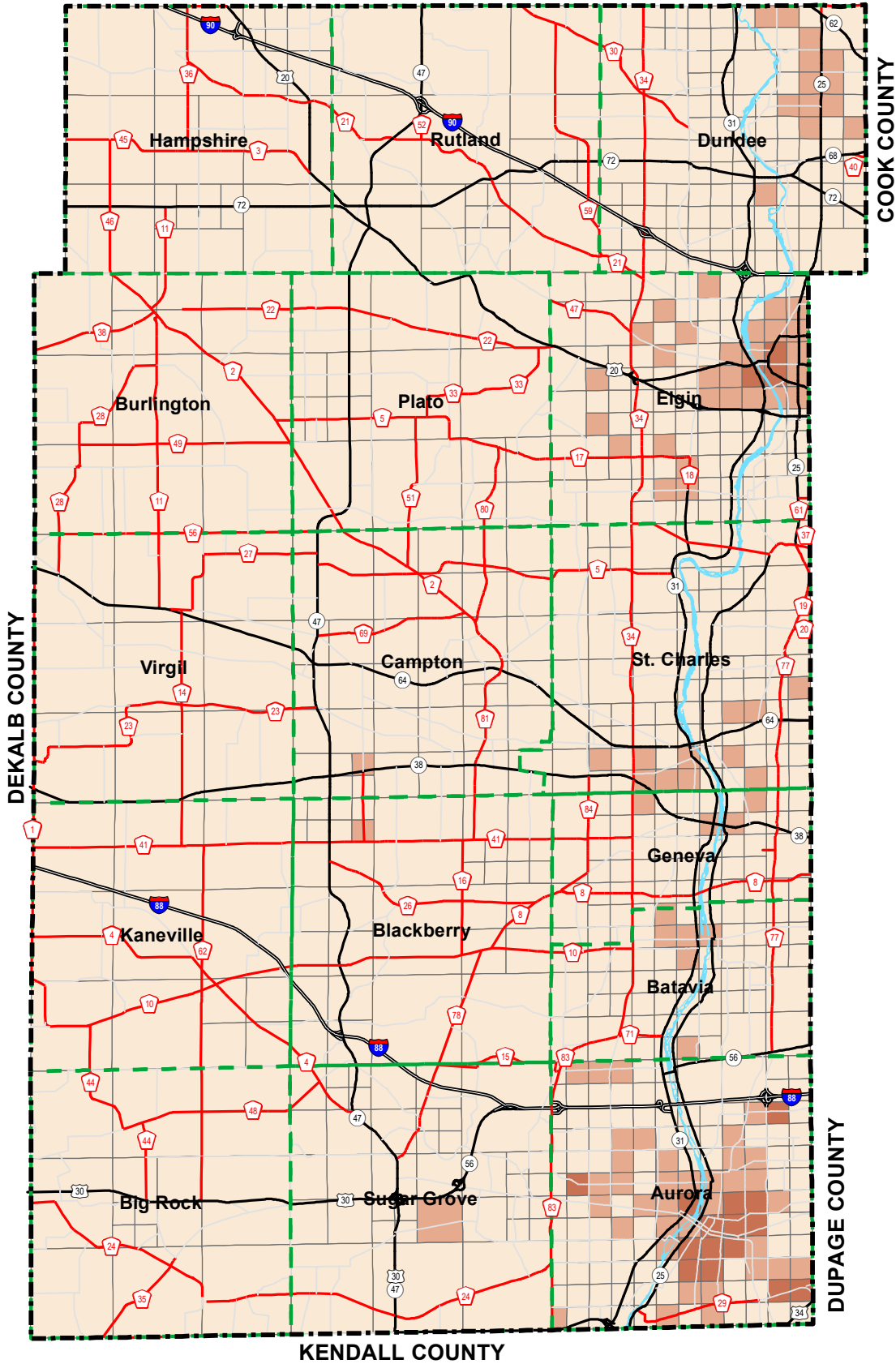
- 0 - 3
- 4 - 6
- 7 - 10
- > 10
- Kane County Boundary
- Political Township Boundaries

Source:
 (1) Political Township - Kane County GIS Department
 (2) 2026 Households - Interpolated Based on 2015 & 2040 SocioEconomic Data

2026 Household Density
 by Kane County TAZ

Exhibit C-2
 Kane County Impact Fee

MCHENRY COUNTY



Revised: 01/22/2016



Household Density (HH Per Acre)

-
 0 - 3
-
 4 - 6
-
 7 - 10
-
 > 10
-
 Kane County Boundary
-
 Political Township Boundaries

Source:

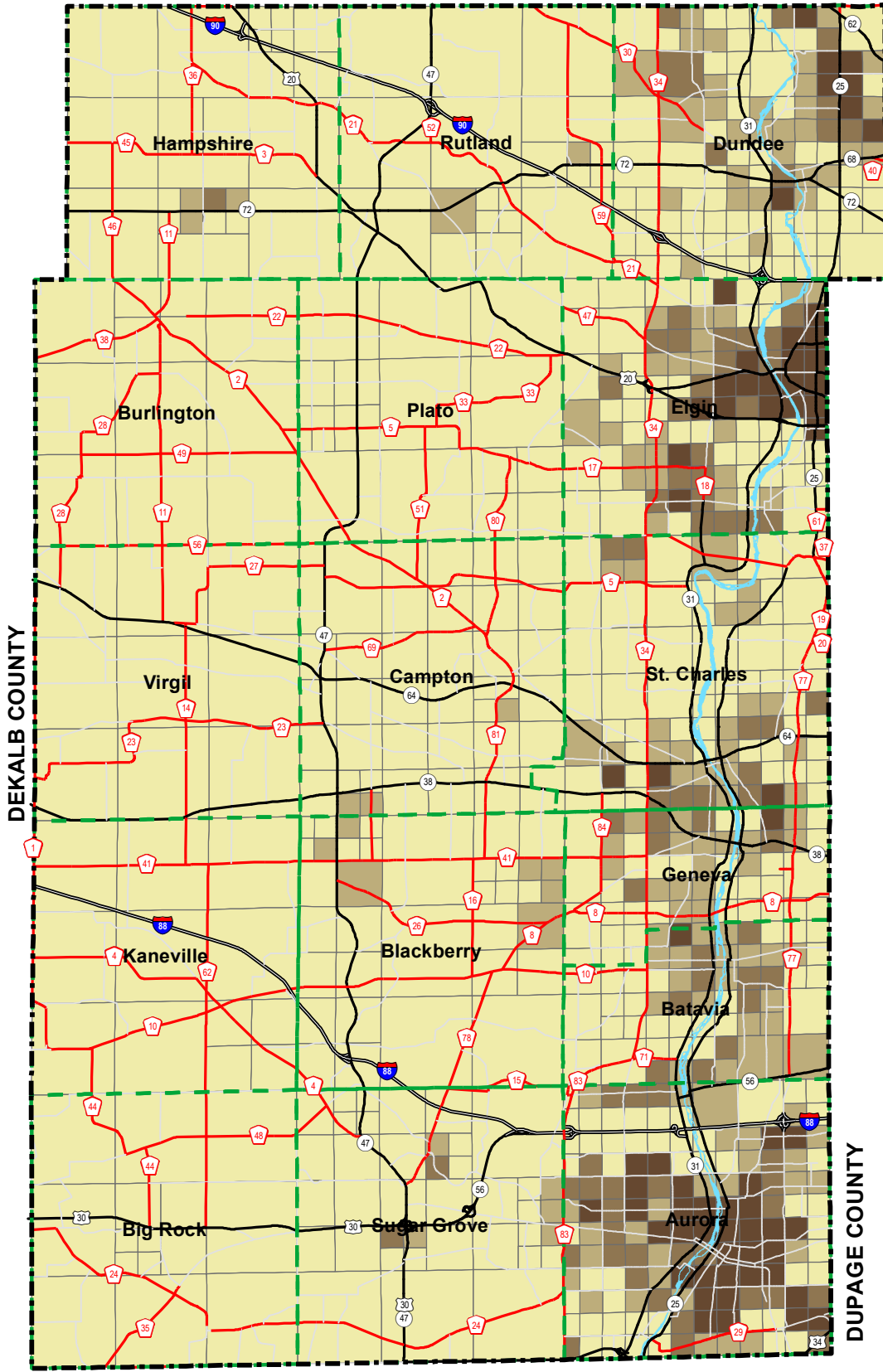
- (1) Political Township - Kane County GIS Department
- (2) 2040 Households - Generated Based on CMAP GoTo 2040 Plan Inputs with Kane County Refinements

2040 Household Density
by Kane County TAZ

Exhibit C-3
Kane County Impact Fee

MCHENRY COUNTY

COOK COUNTY



KENDALL COUNTY

DUPAGE COUNTY

Revised: 01/22/2016



Population Density (POP Per Acre)

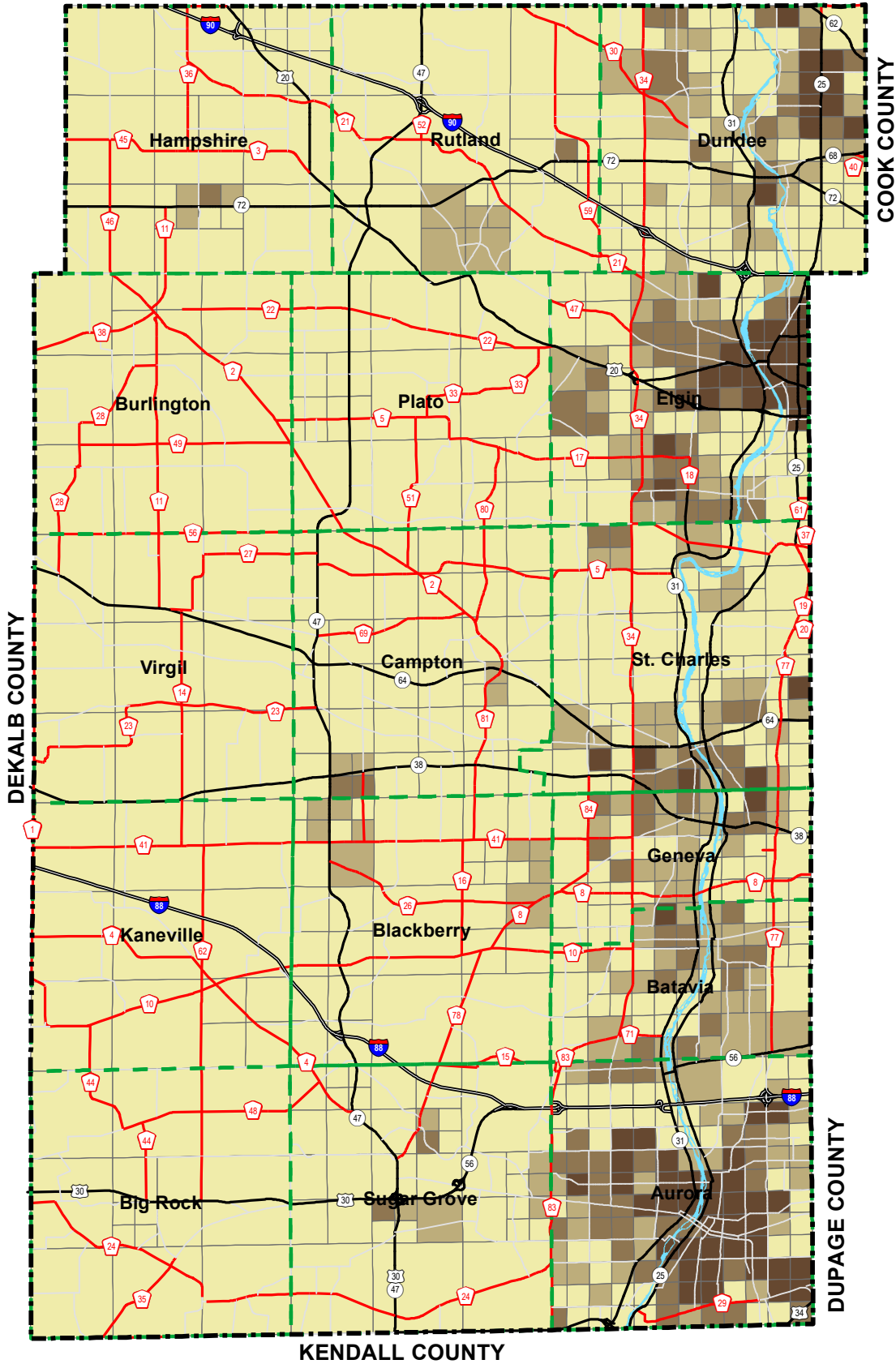
0 - 3	7 - 10	Kane County Boundary
4 - 6	> 10	Political Township Boundaries

2015 Population Density by Kane County TAZ

Source:
 (1) Political Township - Kane County GIS Department
 (2) 2015 Population - Generated Based on CMAP GoTo 2040 Plan Inputs

Exhibit C-4
 Kane County Impact Fee

MCHENRY COUNTY



Revised: 01/22/2016



Population Density (POP Per Acre)

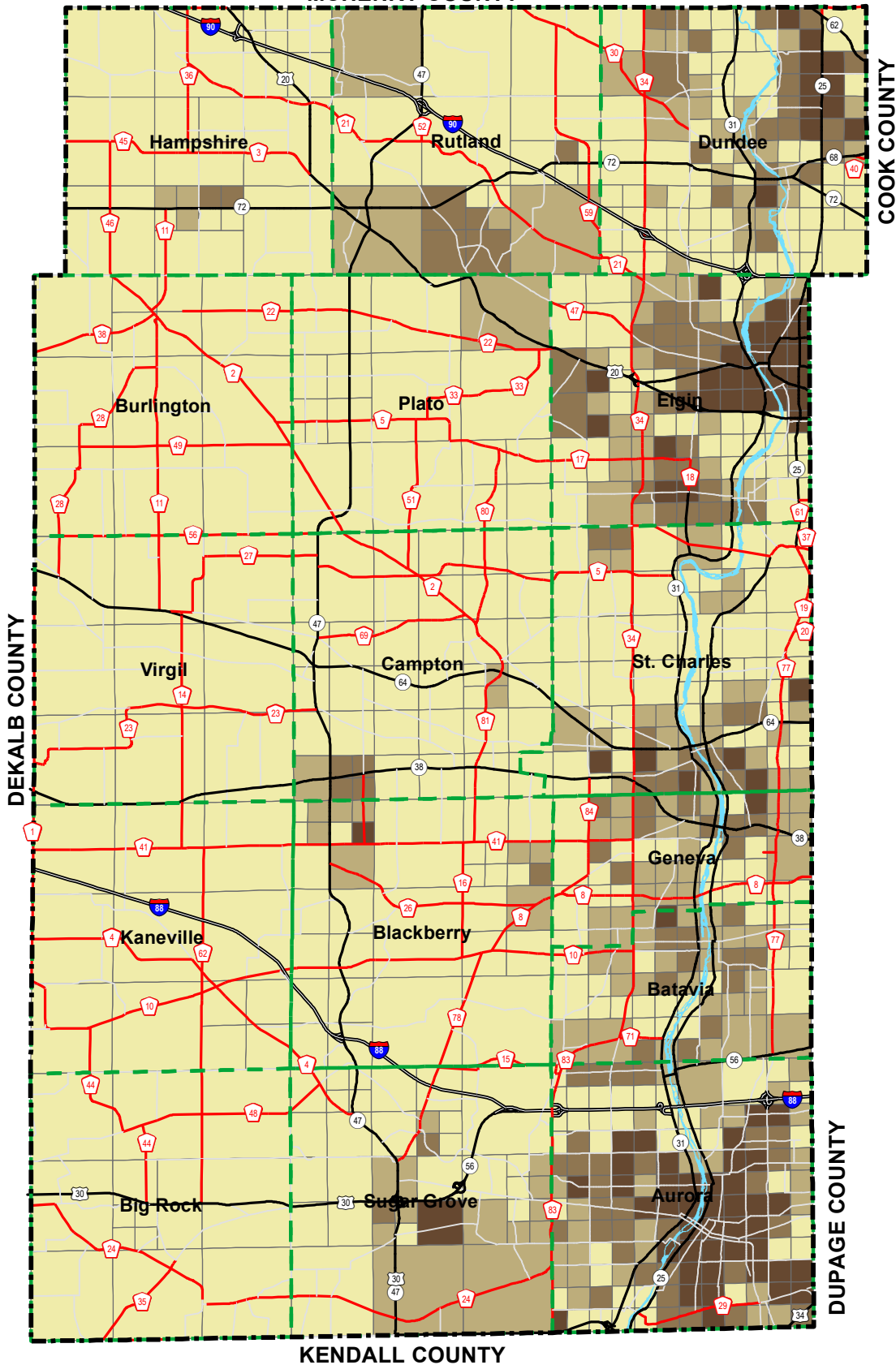
- 0 - 3
 7 - 10
 Kane County Boundary
- 4 - 6
 > 10
 Political Township Boundaries

Source:
 (1) Political Township - Kane County GIS Department
 (2) 2026 Population - Interpolated Based on 2015 & 2040 SocioEconomic Data

2026 Population Density
 by Kane County TAZ

Exhibit C-5
 Kane County Impact Fee

MCHENRY COUNTY



Revised: 01/22/2016



Population Density (POP Per Acre)

- 0 - 3
 - 4 - 6
 - 7 - 10
 - > 10
- Kane County Boundary
- Political Township Boundaries

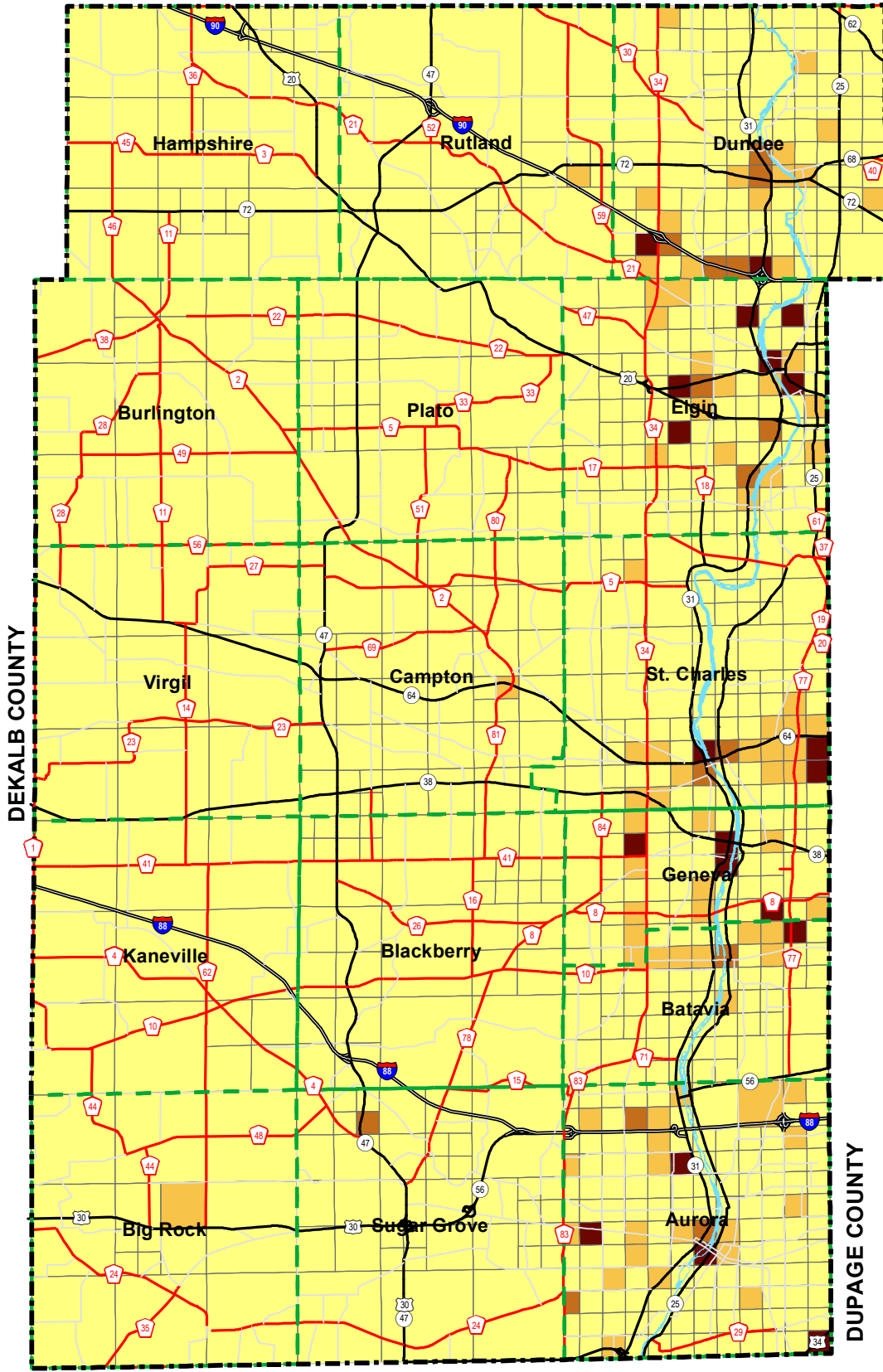
Source:
 (1) Political Township - Kane County GIS Department
 (2) 2040 Population - Generated Based on CMAP GoTo2040 Plan Inputs with Kane County Refinements

2040 Population Density
by Kane County TAZ

Exhibit C-6
Kane County Impact Fee

MCHENRY COUNTY

COOK COUNTY



KENDALL COUNTY

DUPAGE COUNTY

Revised: 01/22/2016



- Employment Density (EMP Per Acre)
- 0 - 3
 - 4 - 6
 - 7 - 10
 - > 10
 - Kane County Boundary
 - Political Township Boundaries

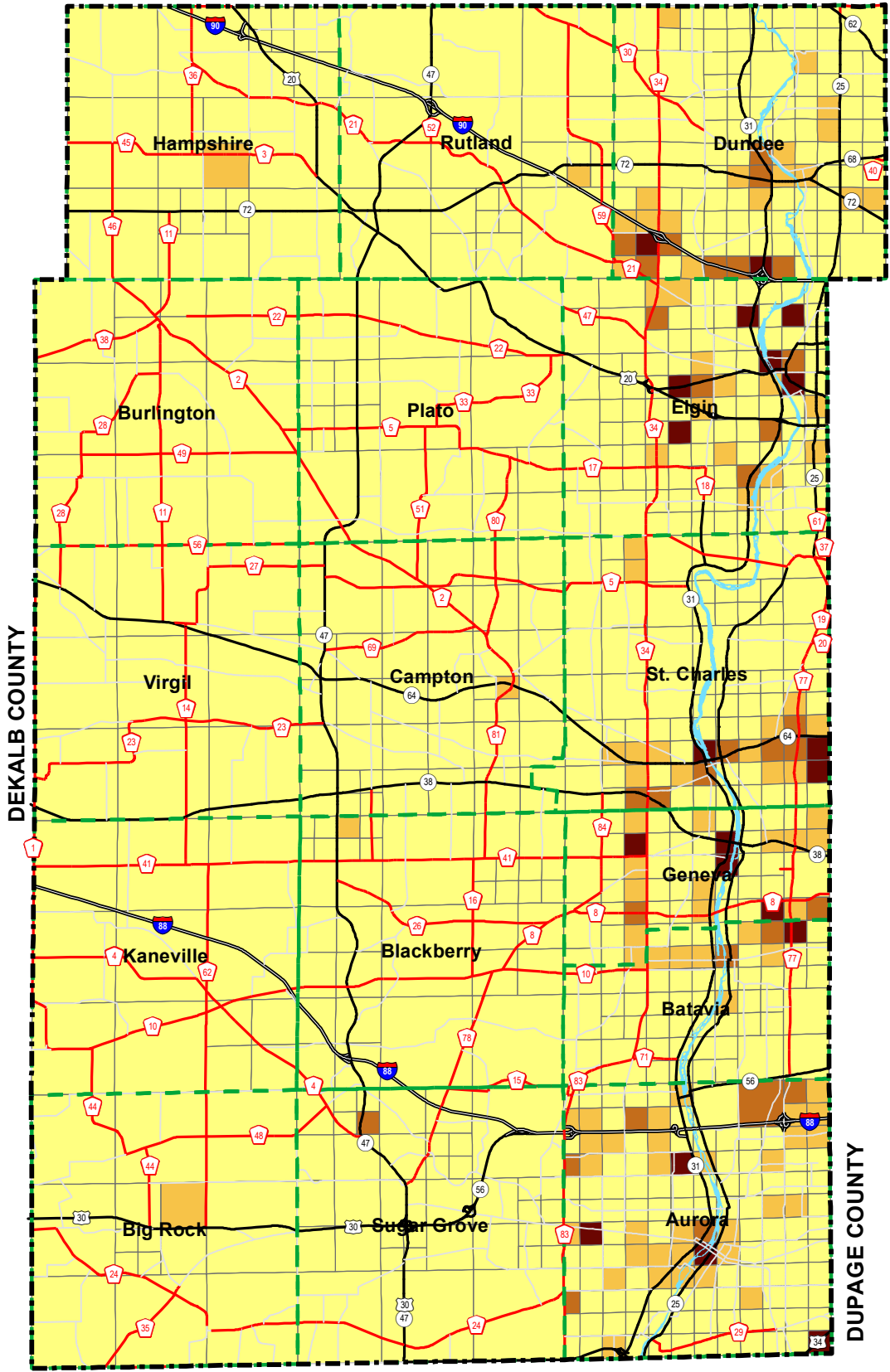
2015 Employment Density by Kane County TAZ

Source:
 (1) Political Township - Kane County GIS Department
 (2) 2015 Employment - Generated Based On CMAP GoTo 2040 Plan Inputs

Exhibit C-7
 Kane County Impact Fee

MCHENRY COUNTY

COOK COUNTY



DEKALB COUNTY

DUPAGE COUNTY

KENDALL COUNTY

Revised: 01/22/2016



Employment Density (EMP Per Acre)

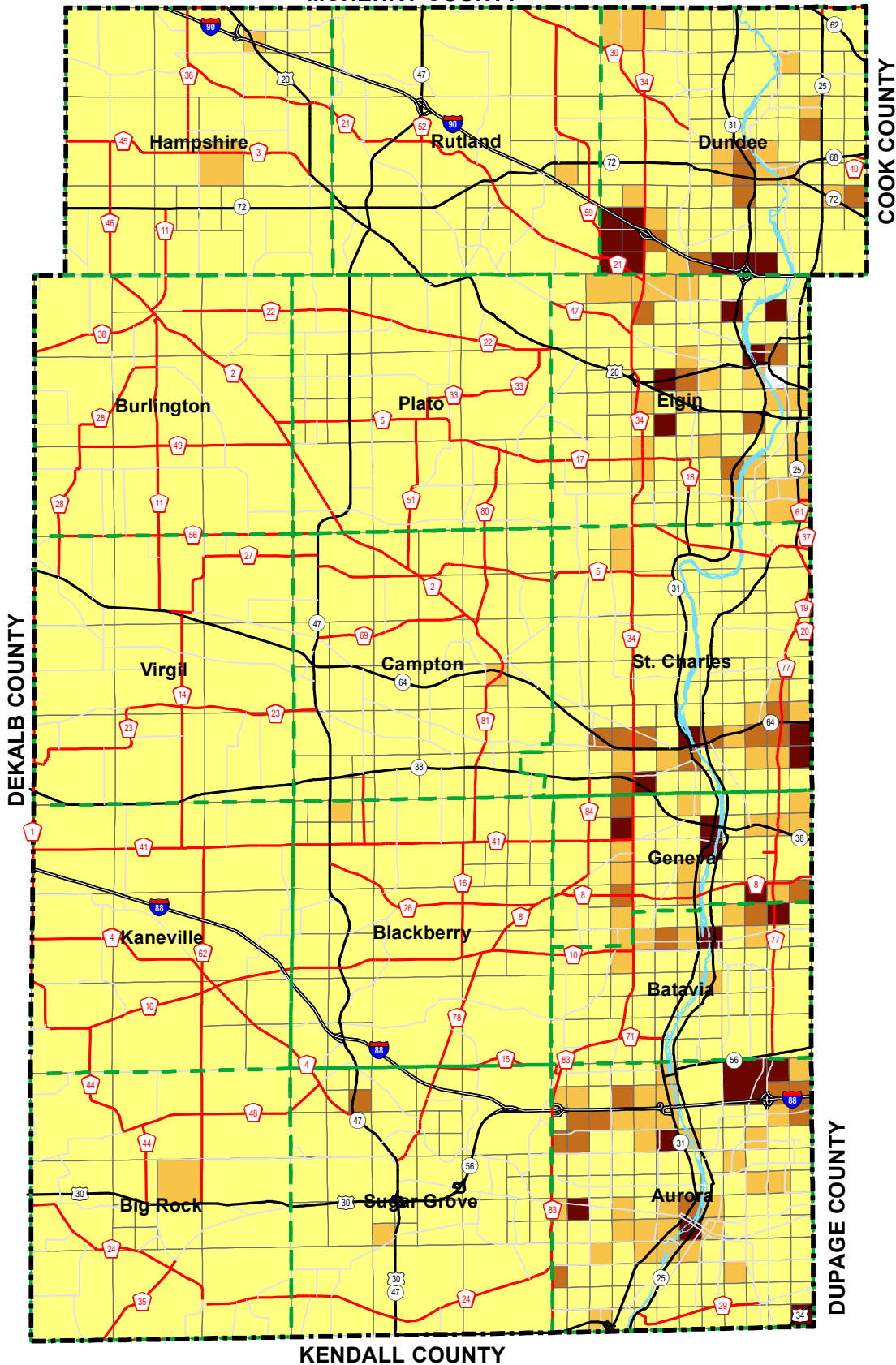
- 0 - 3
- 4 - 6
- 7 - 10
- > 10
- Kane County Boundary
- Political Township Boundaries

Source:
 (1) Political Township - Kane County GIS Department
 (2) 2026 Employment - Interpolated Based on 2015 & 2040 SocioEconomic Data

2026 Employment Density
 by Kane County TAZ

Exhibit C-8
 Kane County Impact Fee

MCHENRY COUNTY



Revised: 01/22/2016



Employment Density (EMP Per Acre)

- 0 - 3
- 4 - 6
- 7 - 10
- >10
- Kane County Boundary
- Political Township Boundaries

Source:
 (1) Political Township - Kane County GIS Department
 (2) 2040 Employment - Generated Based on CMAP GoTo 2040 Plan Inputs with Kane County Refinements

2040 Employment Density by Kane County TAZ

Exhibit C-9
 Kane County Impact Fee